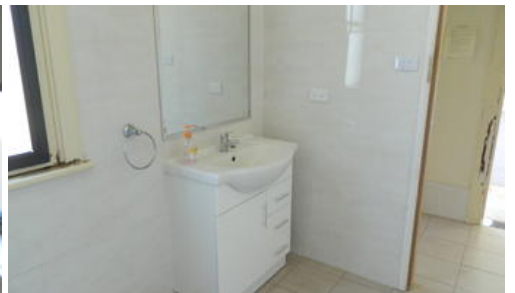




103 Louee St, Rylstone



Solid Family Home 2000 sqm

🛏️ 4 🚿 2 🚗 2

Price SOLD for \$285,000

Property Type residential

Property ID 209

Land Area 2,000 m2

Floor Area 150 m2

Agent Details

Jacqui Shipman - 02 6379 6668

Andrew Shipman - 0423690336

Office Details

Shipman's Real Estate

16 Angus Ave Kandos NSW 2848

Australia

02 6379 6668

Large Home on a huge 2000 sqm allotment.

Four bedrooms

Two bathrooms

Fire place

Air Conditioner

Easy walk to main street amenities

Ready to go

The above information provided has been furnished to us by the vendor/s. We have not verified whether or not that information is accurate and do not have any belief in one way or the other in its accuracy. We do not accept any responsibility to any person for its accuracy and do no more than pass it on. All interested parties should make and rely upon their own inquiries in order to determine whether or not this information is in fact accurate.

