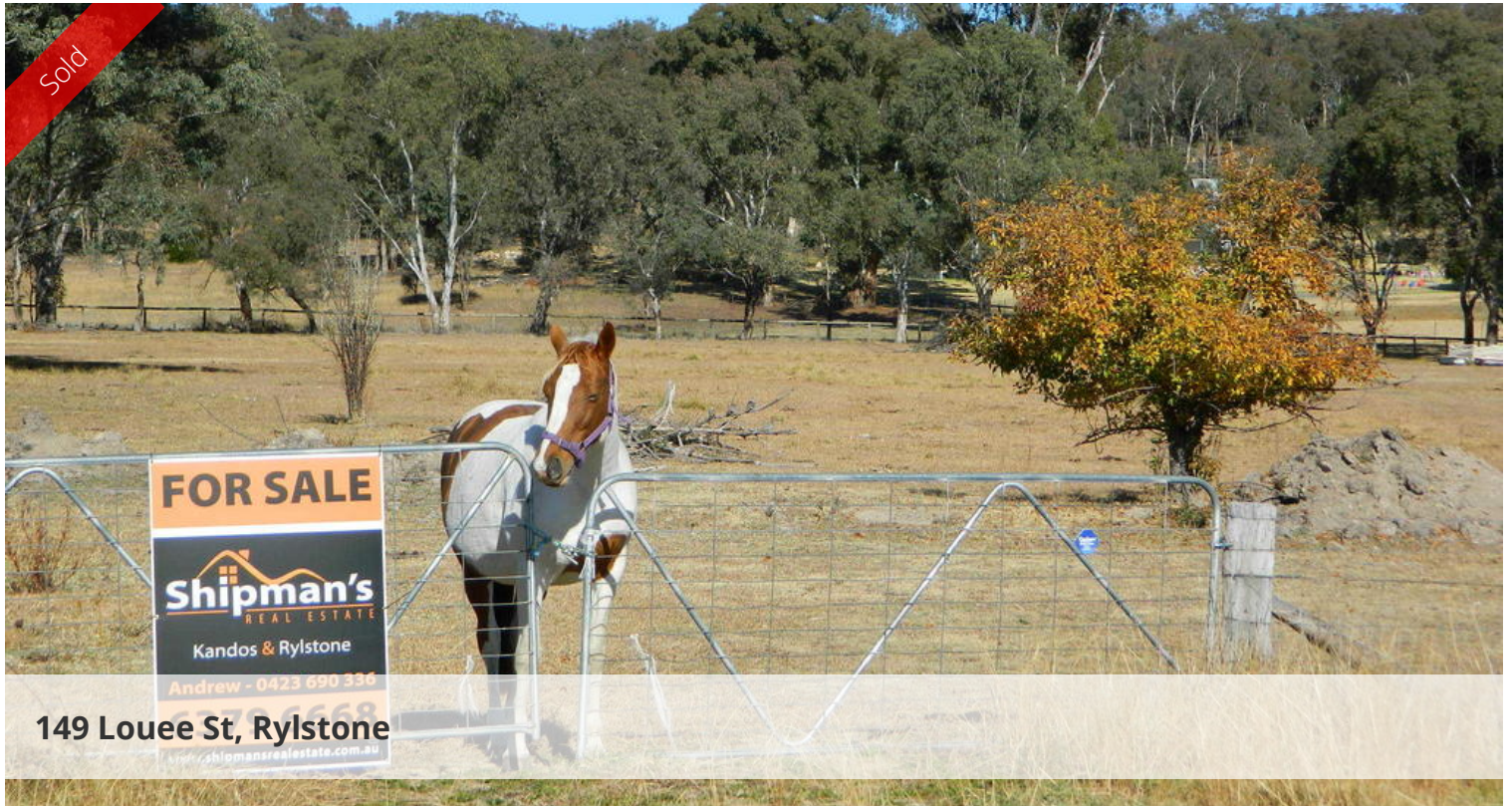


Sold



149 Louee St, Rylstone

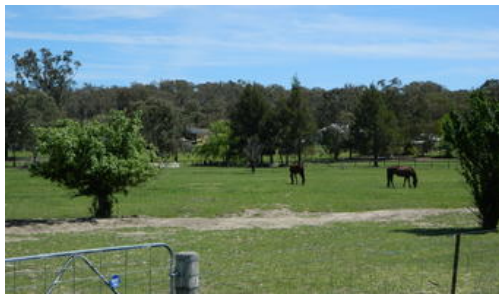
FOR SALE

Shipman's
REAL ESTATE

Kandos & Rylstone

Andrew - 0423 690 336

02 6379 6668
www.shipmansrealestate.com.au



4 ACRES ON THE EDGE OF RYLSTONE VILLAGE!!

This 4 x 1 acre allotment to be sold, offers so many opportunities.

Fully fenced and with rural views and an excellent bore putting out 3,000 ltrs /hr, perfect set up for agistment.

Priced for a quick sale, call Andrew 0423 690 336.

Zoned by MWRC as flood prone but there are development opportunities subject to council approval.

The above information provided has been furnished to us by the vendor/s. We have not verified whether or not that information is accurate and do not have any belief in one way or the other in its accuracy. We do not accept any responsibility to any person for its accuracy and do no more than pass it on. All interested parties should make and rely upon their own inquiries in order to determine whether or not this information is in fact accurate.

Price SOLD for \$115,000
Property Type residential
Property ID 165
Land Area 4.00 ac

Agent Details

Jacqui Shipman - 02 6379 6668

Office Details

Shipman's Real Estate
16 Angus Ave Kandos NSW 2848
Australia
02 6379 6668

